

# PRODUCTION VARIANTS OF VIRTUAL MODELS

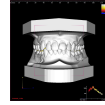
TYPE OF A DIGITAL MODEL INITIAL MATERIAL	stl 	Basic 	semi pro 
IMPRESSIONS + OCCLUSAL PLATES 	YES	YES	YES
GYPSUM MODELS 	YES	YES	YES
STL FILES 	X	YES	YES
INTRAORAL SCAN 	X	YES	YES
MODEL 'BASIC' 	YES, FREE the tool available in DDP-Ortho	X	YES

# FUNCIONAL VARIANTS OF VIRTUAL MODELS



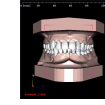
**Digital STL model**

The simplest digital model in stl format, without standardization, thus it cannot be directly used for work. It requires payable software, time-consuming processing, and advanced computer literacy.



**Digital model 'Basic'**

The basic type of models in the offer ready to work using free specialized DDP-Ortho software. Broad application, including teeth segmentation and virtual set-up. It allows for a comprehensive scope of work and maintenance of documentation.



**Digital model 'Semipro'**

The advanced version of model 'basic' with segmented teeth. It is intended for even more precise and comfort planning and treatment support. It is especially recommended for designing aligners or analyzing treatment variants.

Digital models:	stl	basic	semipro
<b>Application:</b>			
1. To be used with DDP-Ortho software	no	yes	yes
- automatic analysis	no	yes	yes
- measurements / macros	no	yes	yes
- set-up / treatment planning	no	yes	yes
- aligners planning	no	yes, after segmentation	yes
- indirect braces bonding	no	yes	yes
- virtual articulator	no	yes	yes
- complete patient's medical history	no	yes	yes
- cephalometric analysis	no	yes	yes
2. Data storage	yes	yes	yes
3. The 3D model print-outs	yes, after processing	yes	yes
4. Initial data for CAD/CAM systems	yes	yes	yes
<b>Saved in format:</b>	.stl	.o3m / .ddp	.o3m / .ddp
<b>Protection against falsification:</b>	no	yes	yes
<b>Technical support:</b>	no	yes, free of charge	yes, free of charge

STL files compare to DDP Ortho (Digital Diagnostic Models)