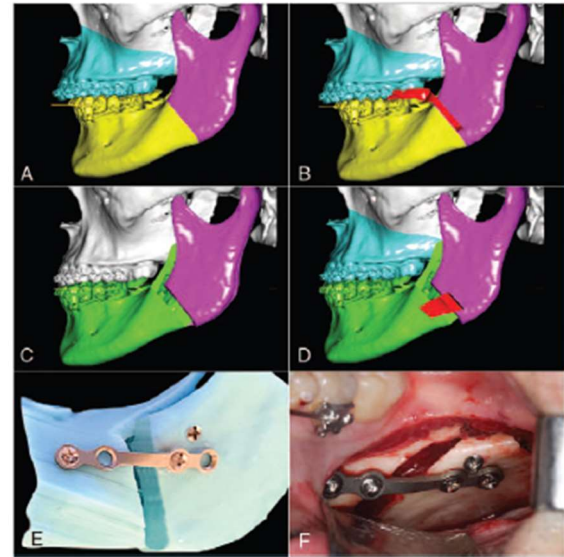
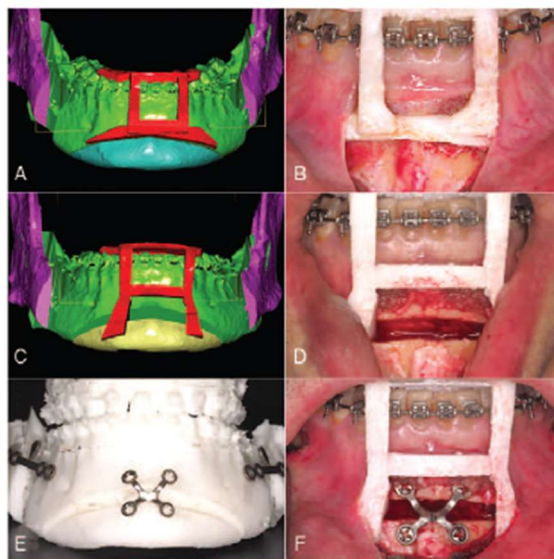


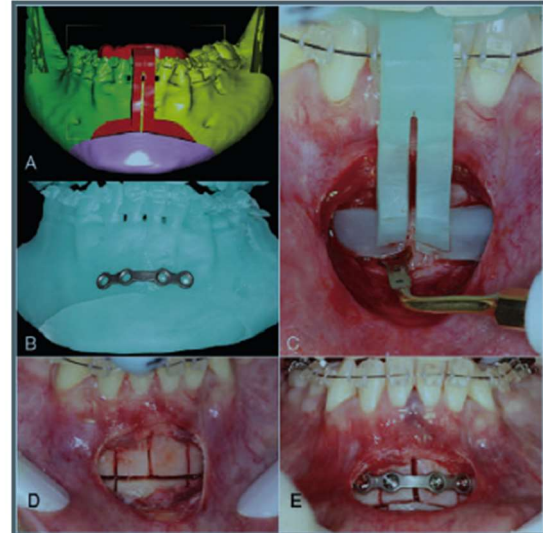
**FIGURE 1.** Maxillary cutting guide using DDS-Pro software: (A) virtual surgical planning and (B) during surgery with a small incision and minimal exposure. (C) Downward maxillary movement and (D) repositioning guide to assist vertical position and maintenance. (E) Miniplates selection and customization using the printed maxilla. (F) Miniplate fixation on the right-side during surgery with minimal exposure.



**FIGURE 2.** Virtual surgical planning for mandibular repositioning: (A) sagittal split osteotomy definition; (B) cutting guide teeth-supported; (C) mandibular advancement after final occlusion and (D) repositioning guide to assist proximal segment maintenance. (E) Miniplate selection and customization using the printed mandible. (F) Miniplate fixation on the left side during surgery similar to the virtual planning and printed model.



**FIGURE 3.** Genioplasty cutting guide during: (A) virtual surgical planning and (B) during surgery with a small incision and minimal exposure. (C) Repositioning chin guide teeth-supported design and (D) during surgery maintaining the vertical repositioning of the chin. (E) Miniplate selection and customization using the printed mandible. (F) Miniplate fixation with minimal exposure.



**FIGURE 4.** (A) Genioplasty cutting guide with the vertical extension for midline mandibular segmentation. (B) Miniplate selection and customization using the printed mandible. (C) Teeth-supported guide adaptation with a small incision and minimal exposure. (D) During surgery after osteotomies. (E) Miniplate fixation after mandibular repositioning.